

CASE STUDIES

Contract: Unite, Duke Street, Southampton, Hampshire.

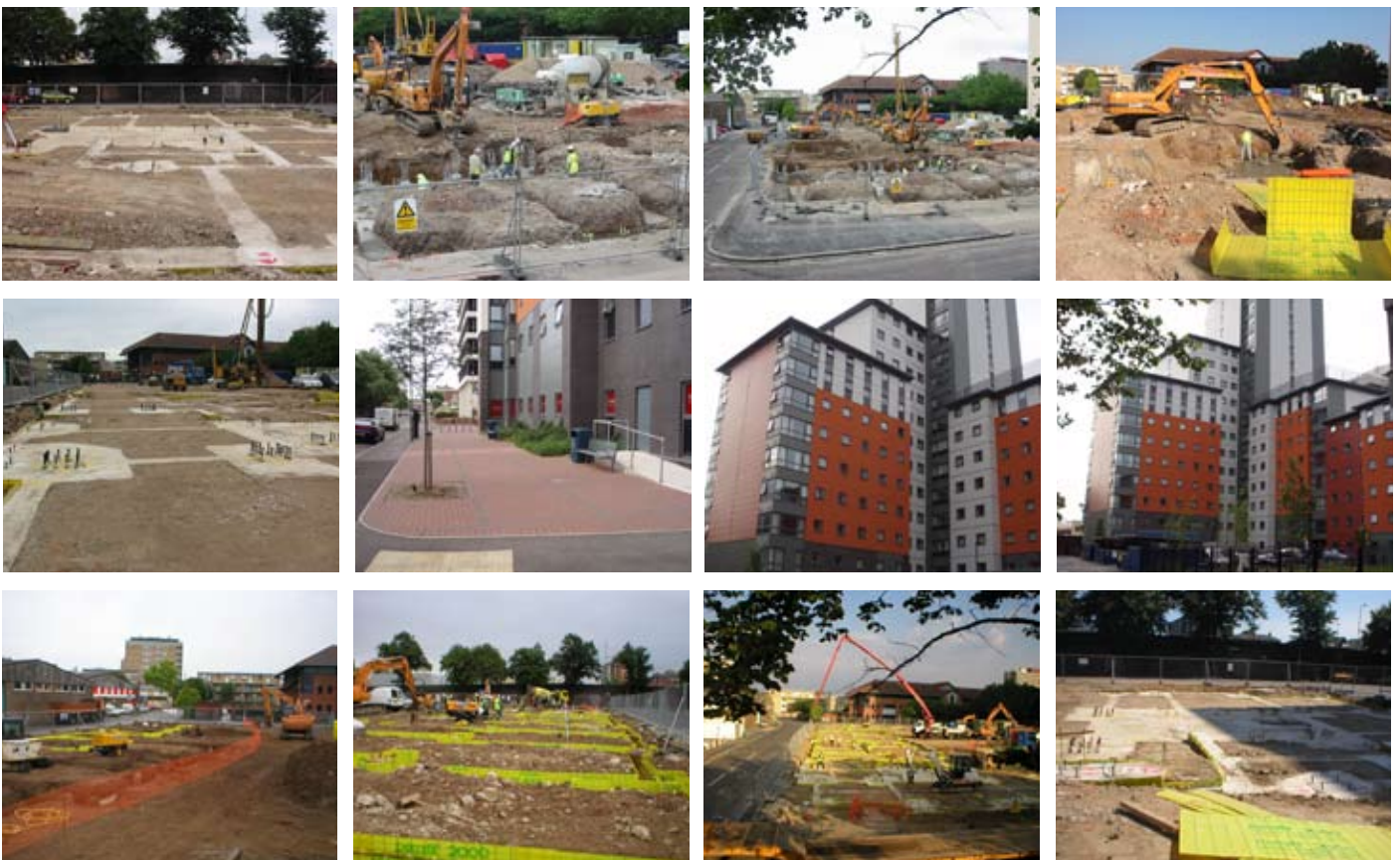
Main Contractors: Warnings

Value: £212,000

Category: New Build Student Accommodation Block on a Brownfield Site.

Scope of Works: Construction of a new multi storey student accommodation building providing 560 bedrooms, Retail Units and a Health Centre on a very tight site.

Works: Labour, plant & materials groundworks package for the construction of a new multi storey building. The initial works involved the cutting down of 250 No concrete piles, installing shutters, reinforcement and pouring 620m³ of concrete in 7 weeks to enable the steel frame to be erected. Return to site to complete drainage and all associated external works.



Woodmace Ltd

Unit 3, Coy Pond Business Pk, Ingworth Road, Poole, Dorset BH12 1JY

Tel: 01202 755500 | Fax: 01202 768152 | Email: info@woodmace.co.uk | www.woodmace.co.uk