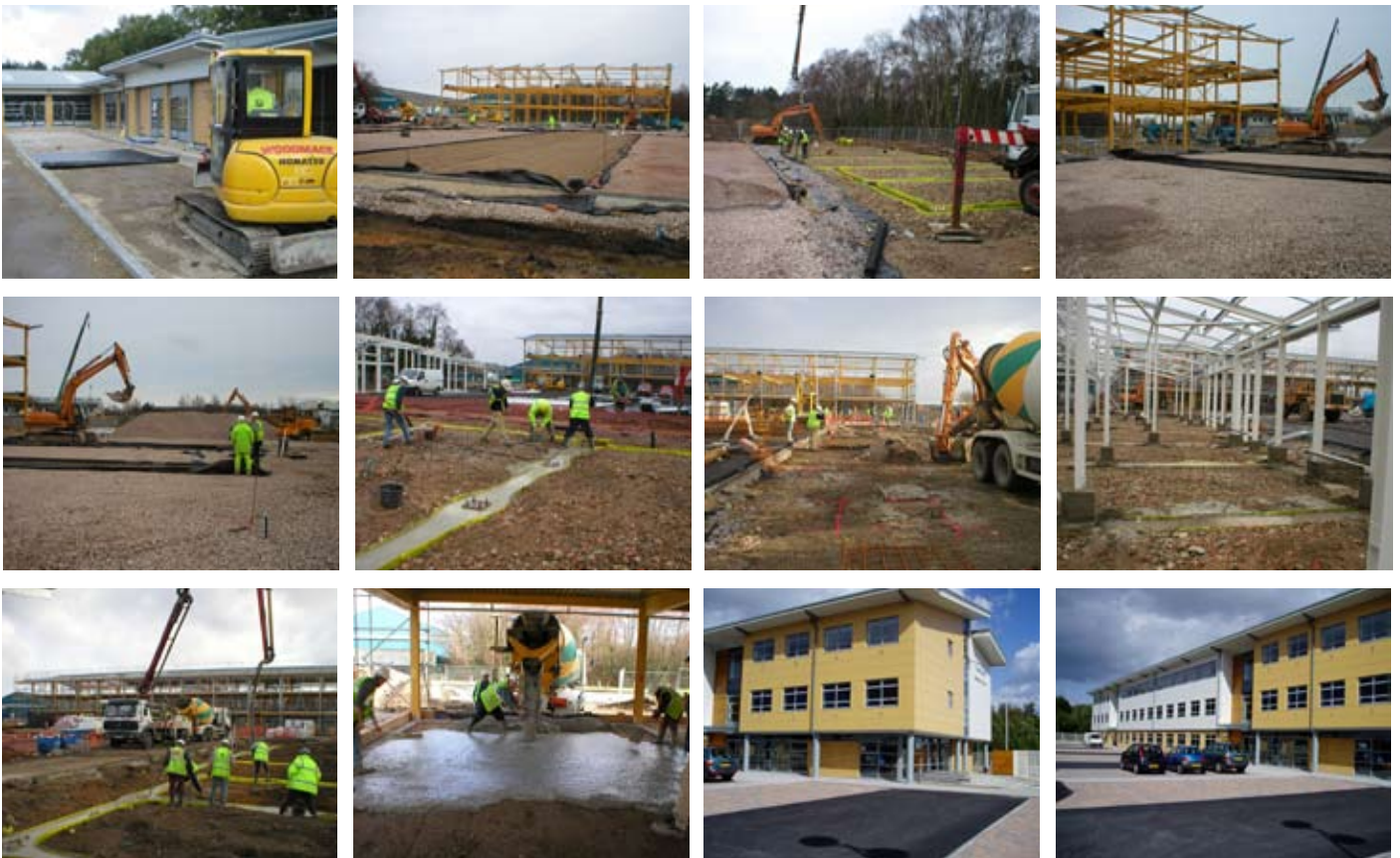


## CASE STUDIES

- Contract:** Basepoint Enterprise Centre, Bournemouth International Airport, Dorset.
- Main Contractors:** Benson Ltd
- Value:** £679,000
- Category:** New Build of an Office Block and Retail Units.
- Scope of Works:** Construction of a new 2 storey office block divided into small offices for rental and 3 no retail buildings divided into 20 No light industrial units. Included access road, car parking, drainage and all associated external works.
- Works included:** Labour, plant and materials groundworks package to construct reinforced concrete ground beams, pile caps and ground floor slab to offices and retail units. Provide 5000m<sup>2</sup> of block paved car parking.



Woodmace Ltd

Unit 3, Coy Pond Business Pk, Ingworth Road, Poole, Dorset BH12 1JY

Tel: 01202 755500 | Fax: 01202 768152 | Email: [info@woodmace.co.uk](mailto:info@woodmace.co.uk) | [www.woodmace.co.uk](http://www.woodmace.co.uk)