

## CASE STUDIES

Contract: City Cruise Terminal, Berth 101, Southampton Docks

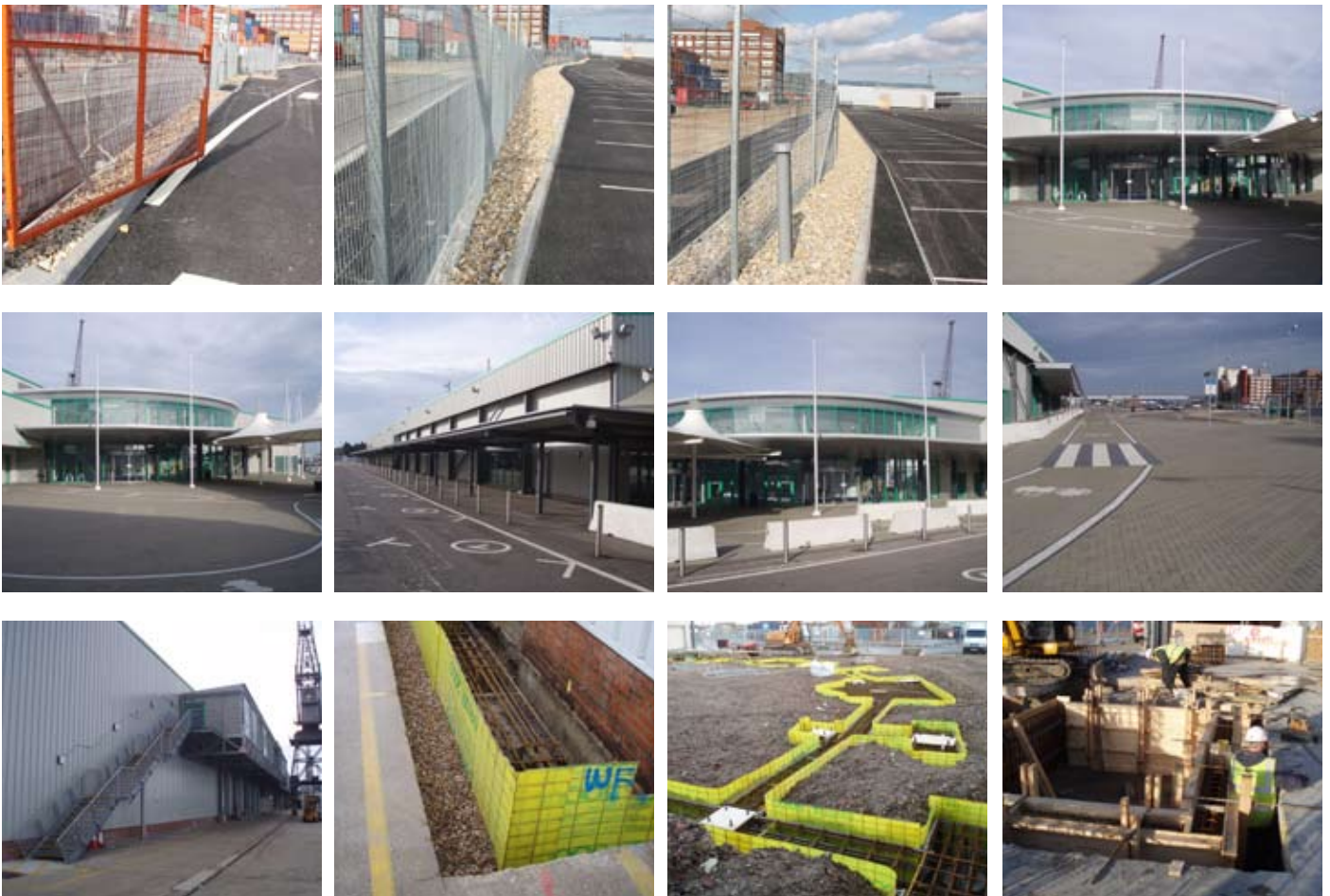
Main Contractors: Warnings

Value: £583,000

Category: New Build Works and Refurbishment Works of the Existing City Cruise Terminal Site.

Scope of Works: Construction of a new entrance structure, new walkway canopy to front elevation and 119m of high level enclosed walkway canopy to dock elevation. New 6,700m<sup>2</sup> car park facility.

Works included: Labour, plant & materials groundworks package to construct new entrance structure, quayside foundations for high level walkway, new canopy foundations new car parking and all associated external works in 21 weeks.



Woodmace Ltd

Unit 3, Coy Pond Business Pk, Ingworth Road, Poole, Dorset BH12 1JY

Tel: 01202 755500 | Fax: 01202 768152 | Email: [info@woodmace.co.uk](mailto:info@woodmace.co.uk) | [www.woodmace.co.uk](http://www.woodmace.co.uk)